

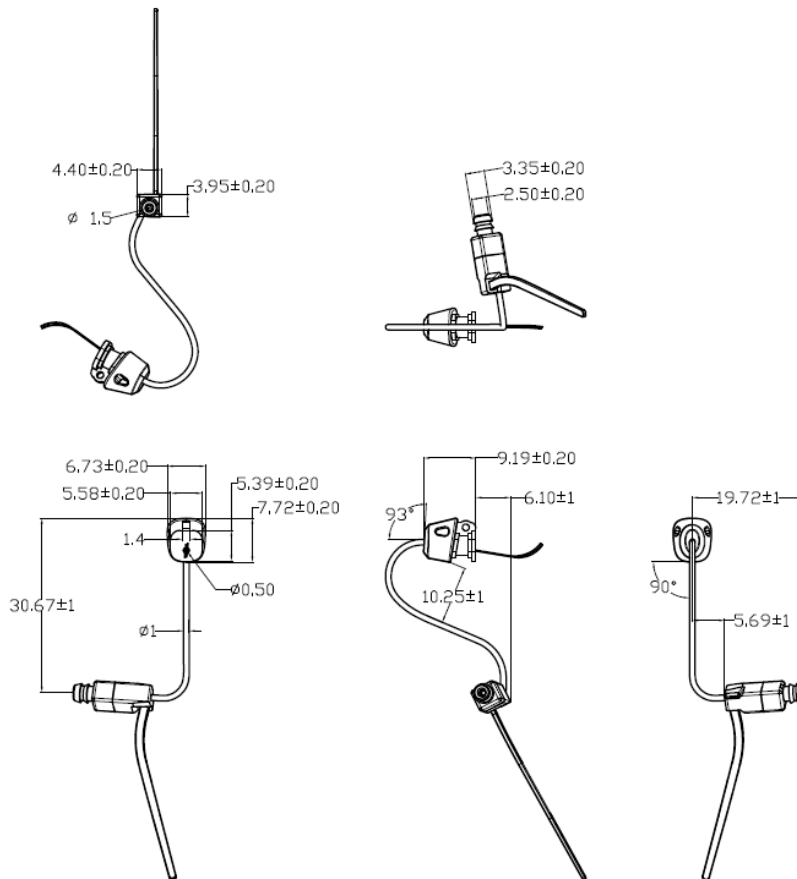
RIC-AHC-120-002R-DE01

Advantages:

- Max. output achieve 123dB.
- RIC model, reduce the interaction between BA and T-coil
- Easy to assembly

Mechanical data:

- Dimensions:



- Solder type: SAC305, and ROHS compliance

Electrical properties:

- Isolation: The case will be electrically isolated from internal coil
- DCR and impedance:

Item	specification
DC resistance	$120\Omega \pm 10\%$
Imp@500 Hz	$154\Omega \pm 15\%$
Imp@1 kHz	$200\Omega \pm 15\%$

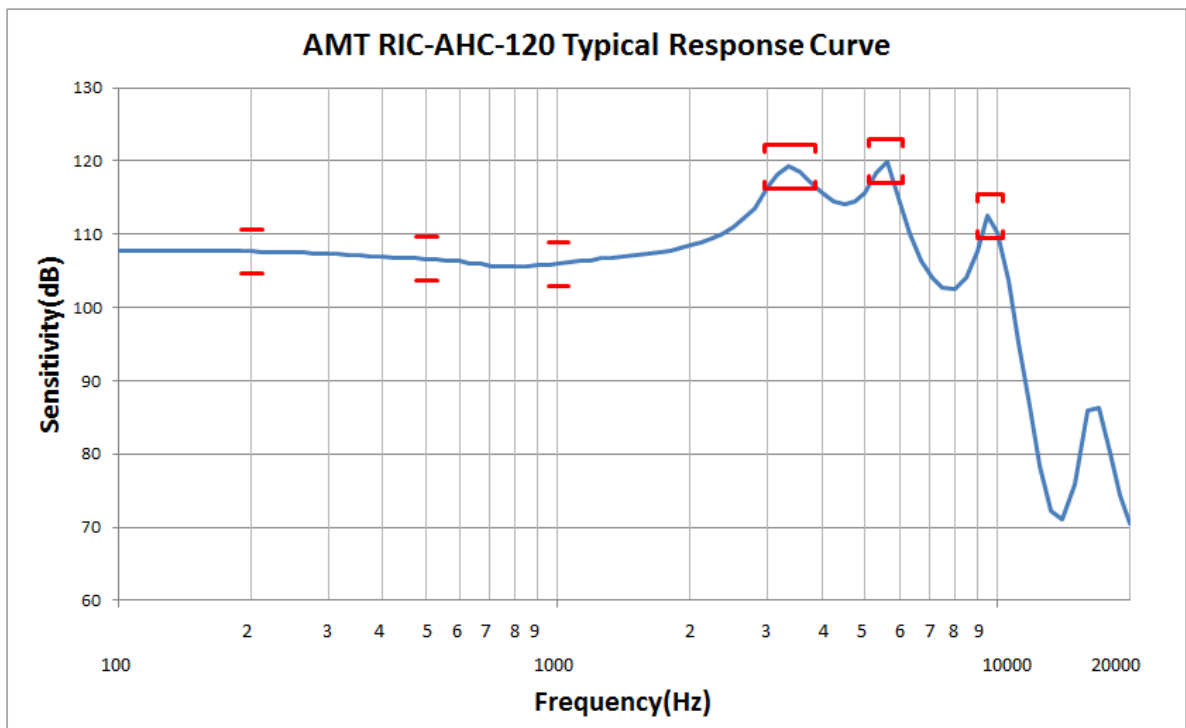
RIC-AHC-120-002R-DE01

Acoustic specification:

1, Test condition

- 1.1 Driver: CV 346mVrms
- 1.2 Tube and cavity: 10mm*dia1.0mm tube into 711 coupler
- 1.3 Source requirements: source impedance <1ohm.

2, Typical response curve and specification:



Specification	Frequency(Hz)	Minimum	Nominal	Maximum
Sensitivity	200	104	107	110
Sensitivity	500	103	106	109
Sensitivity	1000	103	106	109
Peak 1	3050-3650	116	119	121
Peak 2	5100-6100	117	120	123

3, Distortion specification:

Frequency(Hz)	Drive (Vrms)	Limit (%)
1/3 Peak 1	0.346	5%
1/2 Peak 1	0.346	5%

RIC-AHC-120-002R-DE01

Storage and operating requirements:

- Follow below table:

Item	Temperature (°C)	Humidity (%RH)	barometric pressure (hPa)
Storage	-40 ~ 63	10 ~ 60	500 ~ 1060
Operating/test	15 ~ 30	45 ~ 85	860 ~ 1060
Judgment	18 ~ 22	60 ~ 70	860 ~ 1060

Website: www.china-armature.com

Office Tel: (+86) 0519-81882133

Mail box: sales@china-armature.com

Address: No.7 Lanxiang Road economic development zone
Wujin district Changzhou City China